



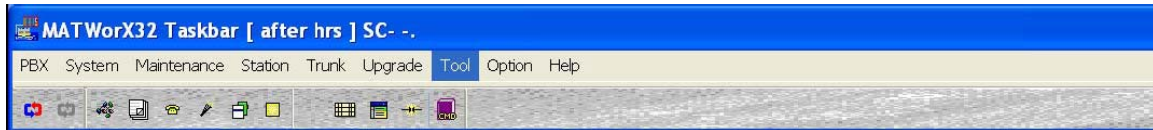
Please follow these instructions to change PBX System Clock by CAT or MOC mode and from ATTCON/DESKCONN:

CAT Mode:

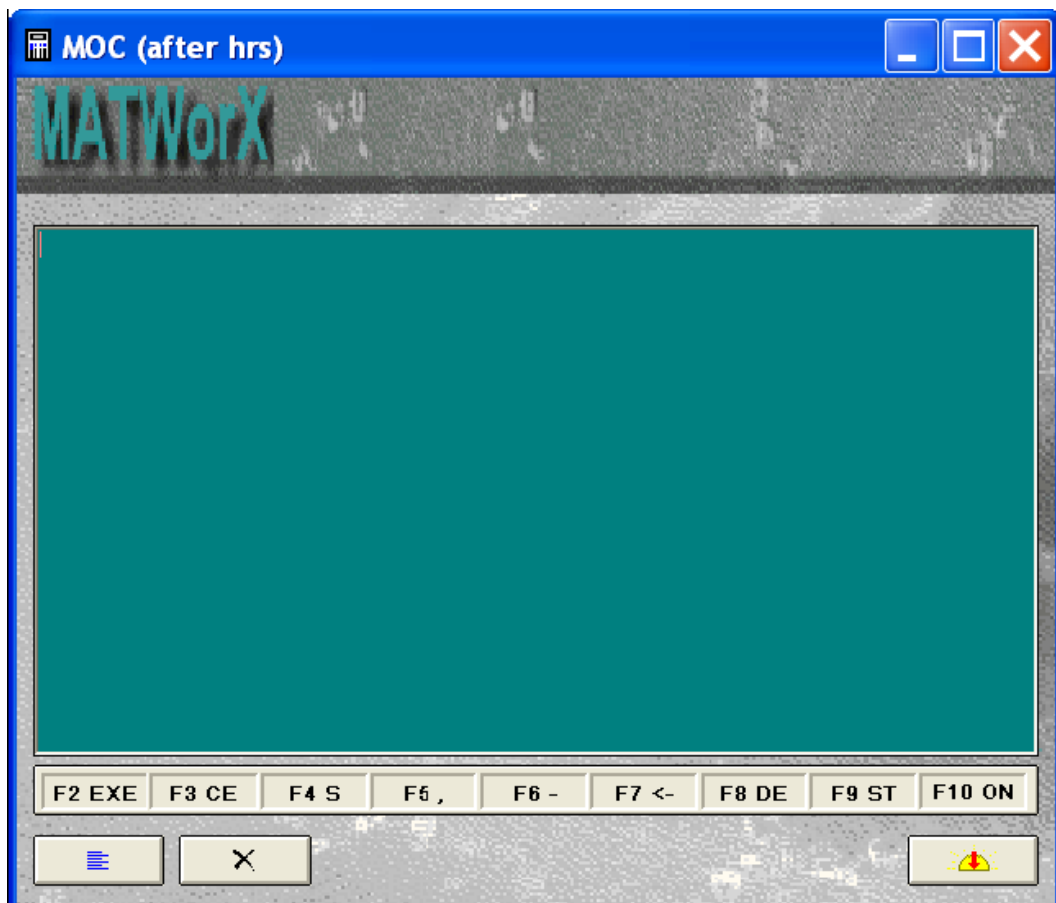
1. Access programming mode by pressing - Transfer, Conf, *, Transfer, Conf, # on a Dterm (display reads CAT MODE)
2. Press the Redial key (display reads COMMAND=)
3. Press 02 on keypad followed by Recall (display reads COMMAND=02)
4. Press 2 on keypad followed by Recall (display reads COMMAND=02>2:xx:yy:zz; xx = hr in 24hr format / yy = min. / zz = sec.)
5. Key in six digits on keypad for new time (hr/min/sec) in 24 hr format followed by the Conf key
6. New time is now set
7. Lift handset on Dterm and hang back up to exit CAT mode

MOC Mode:

1. Connect to PBX using MATWorX IPS
2. Go to Tool drop down window on MATWorX IPS taskbar



3. Select MOC (MOC window will appear)

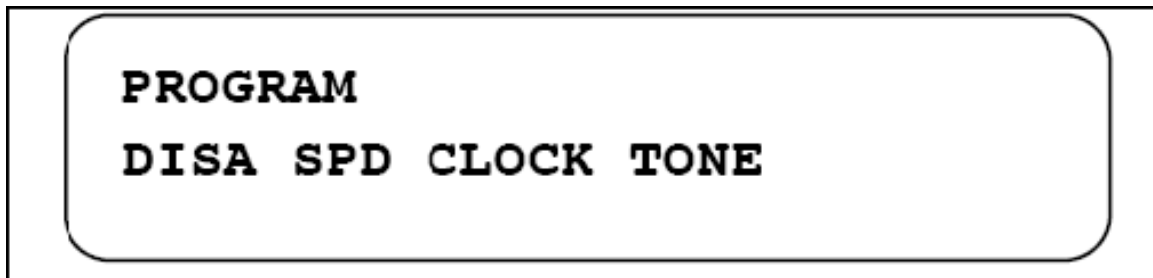


4. Press F9 key on PC (display reads COMMAND=)
5. Type 02 followed by F8 key on PC (display reads COMMAND=02 >02)
6. Type 2 followed by F8 key on PC (display reads 02>2:xx:yy:zz; xx = hr in 24hr format / yy = min. / zz = sec)
7. Type in six digits for new time (hr/min/sec) in 24 hr format followed by the F2 key on the PC
8. New time is now set

ATTCON/DESKCON:

Enter programming mode on ATTCON/DESKCON

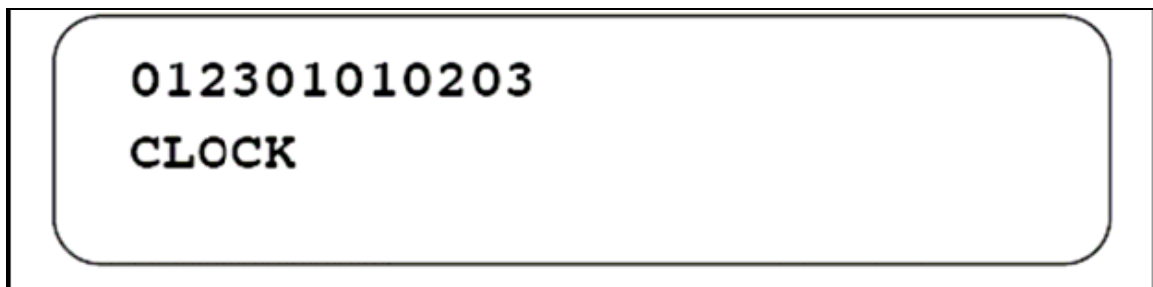
1. Press an idle **LOOP** key
2. Press the **PROG** key
 - The **PROG** key LED (red) lights
 - **PASSWORD** is displayed on the LCD as prompt information
3. Dial the password (1-8 digits)
 - The dialed password is displayed on the LCD
 - When password dialing is completed the following message is displayed on the LCD
 - The **PROG** key LED (red) blinks at this time



- If the **RLS** key is pressed in this status the Attendant Console will return to the idle status
- At this time both **CANCEL** and **Answer** keys are disabled

To set up the system clock:

1. Press the **CLOCK** key.
 - The **CLOCK** key LED (red) comes on
2. Dial the new date and time (12 digits)
Dial the date and time in the following order: MT DY DW HH MM SS
MT: Month (01-12)
DY: Day
DW: Day of week (00-06: SUN-SAT)
HH: Hour (00-23)
MM: Minute (00-59)
SS: Second (00-59)



3. Press the **Answer** key
 - The new date and time are set up
4. Press the **CNCL** key
 - The system goes back to the status assumed after the password was entered

Service Conditions:

- A feature access code can be assigned and dialed instead of using the **PROG** key
- The **PROG** key must be assigned to any of the upper 4 keys of the SN716 DESKCON